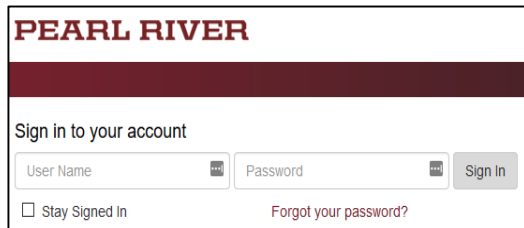


Riverguide 2.0

Quick Start Guide – Staff



PEARL RIVER

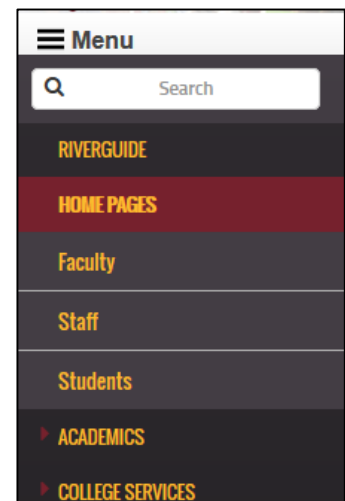
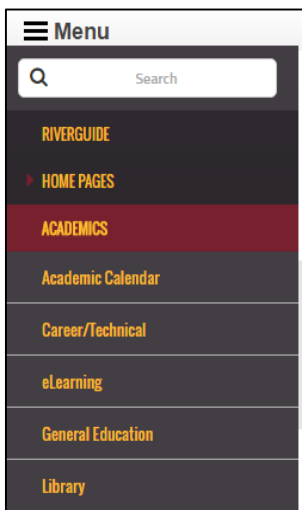
Sign in to your account

User Name Password

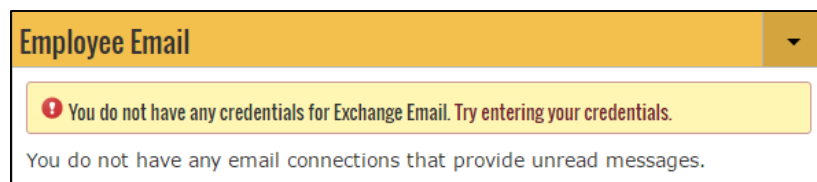
☐ Stay Signed In [Forgot your password?](#)

Enter PRCC credentials (same user credentials as previous Riverguide log on).

Example: User name: jsample Password: Password1



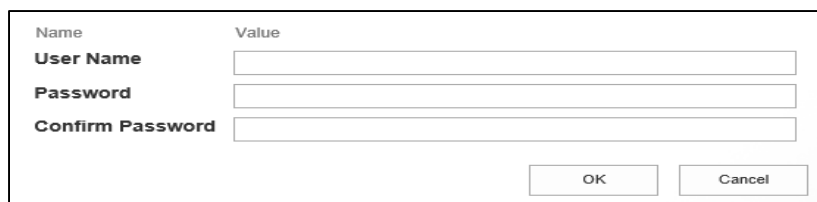
Use the Menu button to navigate to various Information Sites or New Icon Bar to open different applications using Single Sign On (Canvas, Wildcat Web, INB Banner). *Note: Lynx still requires login.*



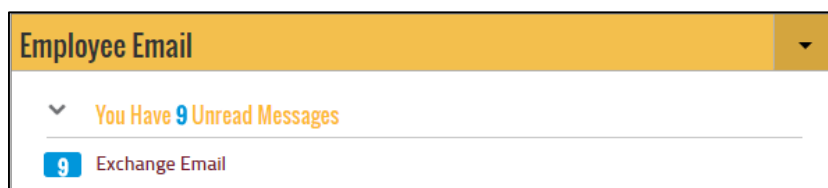
Employee Email

You do not have any credentials for Exchange Email. Try entering your credentials.

You do not have any email connections that provide unread messages.



Name	Value
User Name	<input type="text"/>
Password	<input type="password"/>
Confirm Password	<input type="password"/>



Employee Email

You Have 9 Unread Messages

9 Exchange Email

Click the Email icon or Google Apps to navigate your student email. Note: First time users, may have to enter email credentials to sync up account.

My Bookmarks

CAMPUS LINKS

Directory

IT Work Order

Lynx

Physical Plant Work Order

PRCC Web Site

MY LINKS

There are no links to display yet.

Manage Bookmarks

FAQ

Question : How much is a school ID? (1)

School ID's are free but there is a replacement ID of 15.00.

Use My Bookmarks to navigate to the PRCC Directory, Enter a Work Order, and Update Emergency Notification Contact Information (Lynx). FAQ is Frequently Asked Questions and to view an answer to a question you must click the + on the left side of the question.

Campus Announcements

Campus Events

Campus News

SEP

Intramural Dodgeball

Morgan Smith

20

10:41 AM

Campus Announcements

Campus Events

Campus News

NOV

PRCC vs. Spring Hill JV (Basketball-Women Only)

Poplarville Campus

10

5:30 PM

Campus Announcements

Campus Events

Campus News

▼ PRESS RELEASE

Mu Alpha Theta inducts new members

Wildcats pull away in second half to defeat Delgado

Lady Wildcats improve to 2-0 with victory over Delgado

Total of 115 PRCC students receive 2016 PRVEPA Round Up for Education scholarships

Tickets for Marty Stuart show on sale

3 hours ago

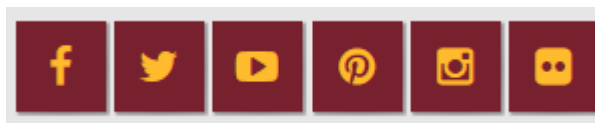
5 days ago

5 days ago

5 days ago

5 days ago

Click on any of the 3 Campus tabs (Campus Announcements, Campus Events, Campus News) to see the latest campus announcements or press releases.



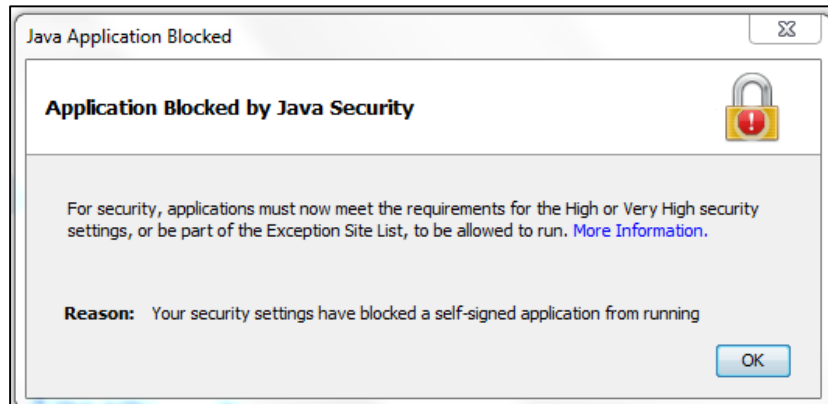
Click any of the above Social Media Icons to navigate to that platform.

Riverguide 2.0

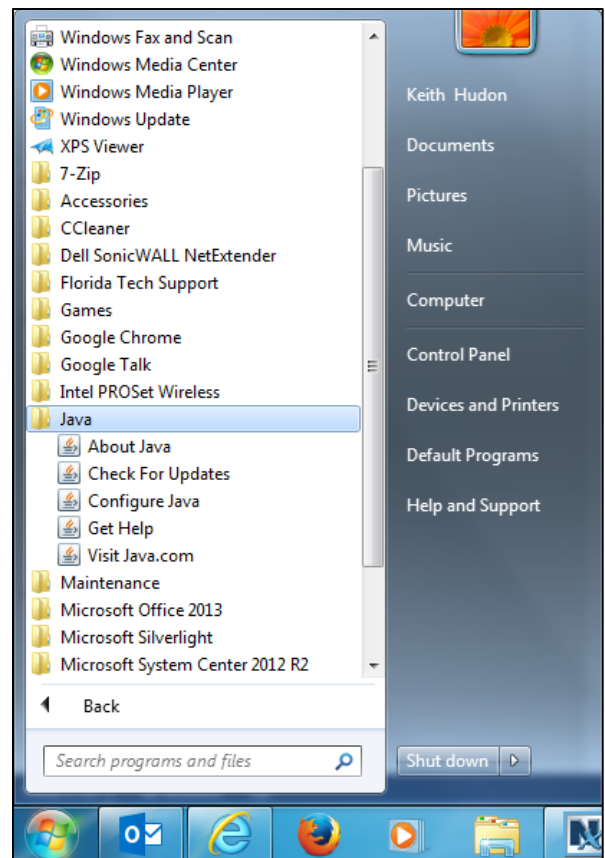
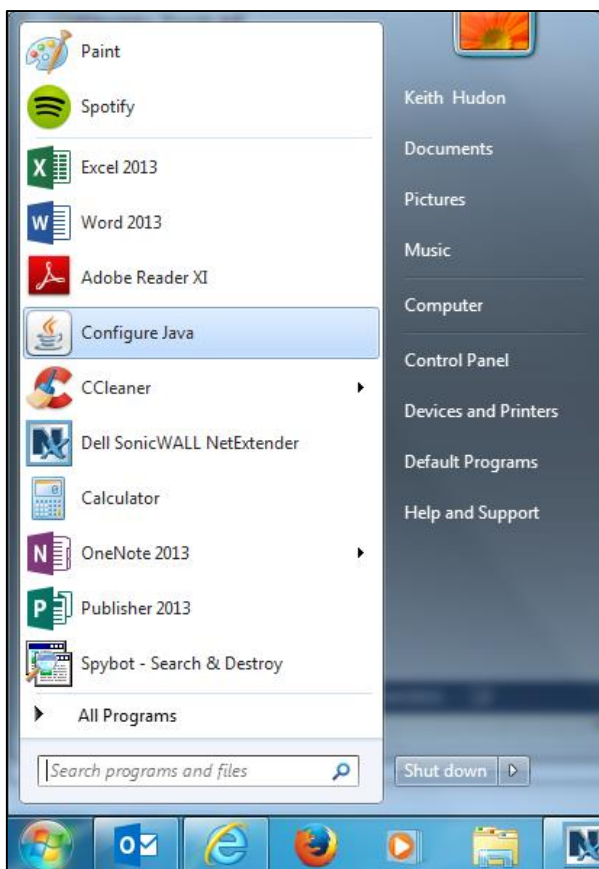
Quick Start Guide – Staff

How to Add Site Exception

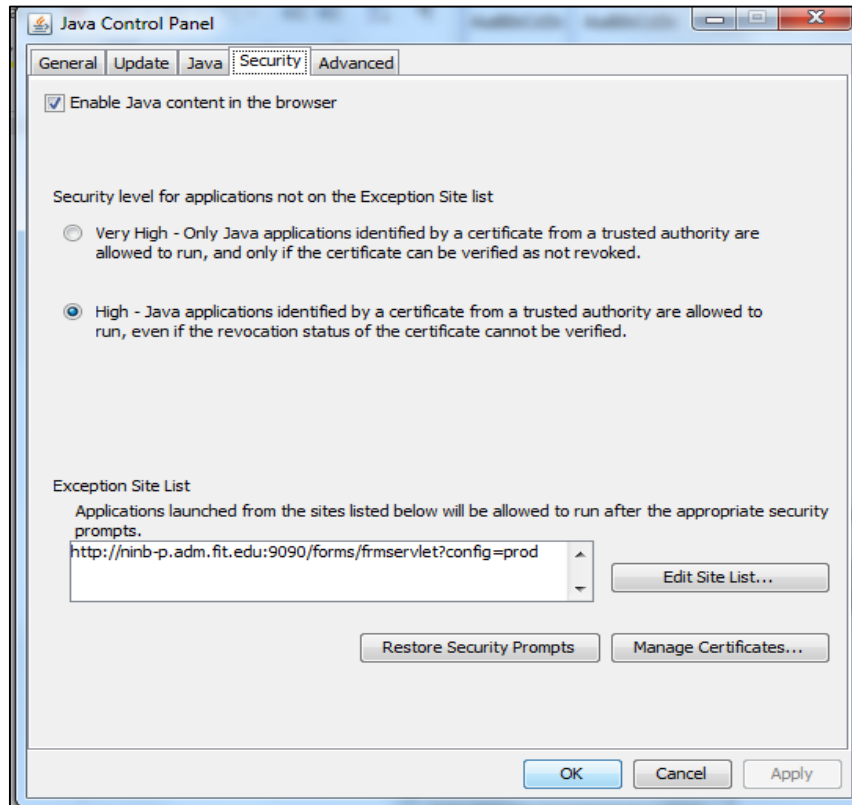
Note: Banner may also appear with a blank screen with a little X box.



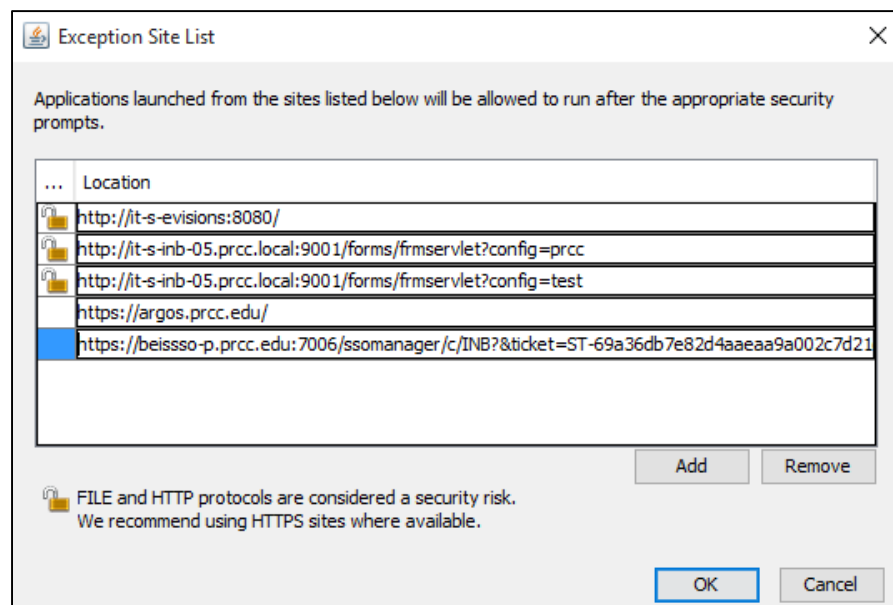
Step 1: Find Configure Java in your start menu and click on it (might be in the Java folder).



Step 2: Click on the Security Tab in the Control Panel. On the bottom right of the Security tab you want to click on Edit Site List...



Step 3: Click add and enter = <https://beisso-p.prcc.edu:7006/ssomanager/c/INB?&ticket=ST-69a36db7e82d4aaea9a002c7d21d62d-eis-p.prcc.edu>



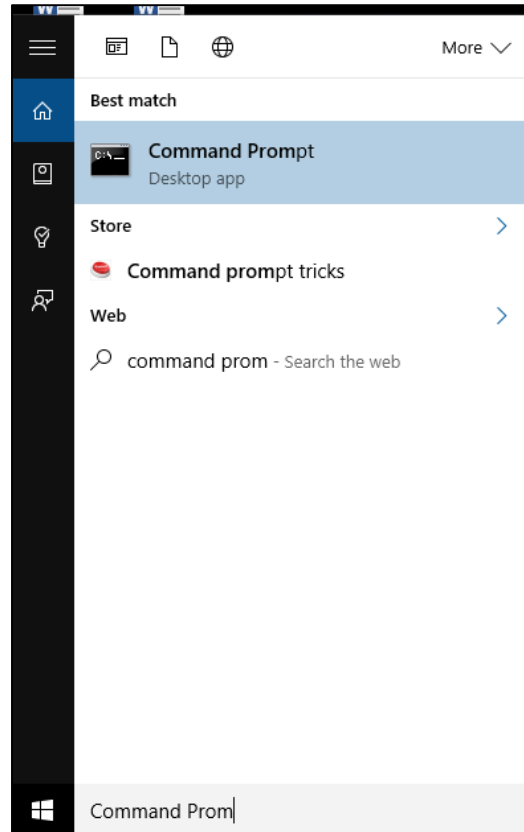
Step 4: Click OK and restart your browser.

Riverguide 2.0

Quick Start Guide – Staff

How to Flush DNS (for page not found)

Step 1: Type Command Prompt in your start menu and click on it.



Step 2: Type: ipconfig /flushdns then hit Enter.

```
Command Prompt
Microsoft Windows [Version 10.0.10240]
(c) 2015 Microsoft Corporation. All rights reserved.

C:\Users\tnoel>ipconfig /flushdns

Windows IP Configuration

Successfully flushed the DNS Resolver Cache.

C:\Users\tnoel>
```

Step 3: Click X to exit.