



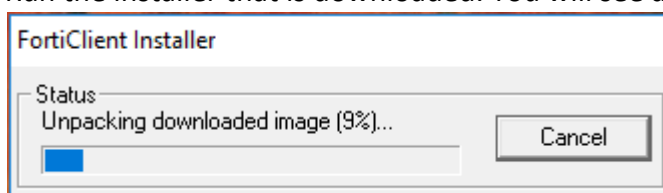
# PRCC VPN Operations

## Table of Contents 1

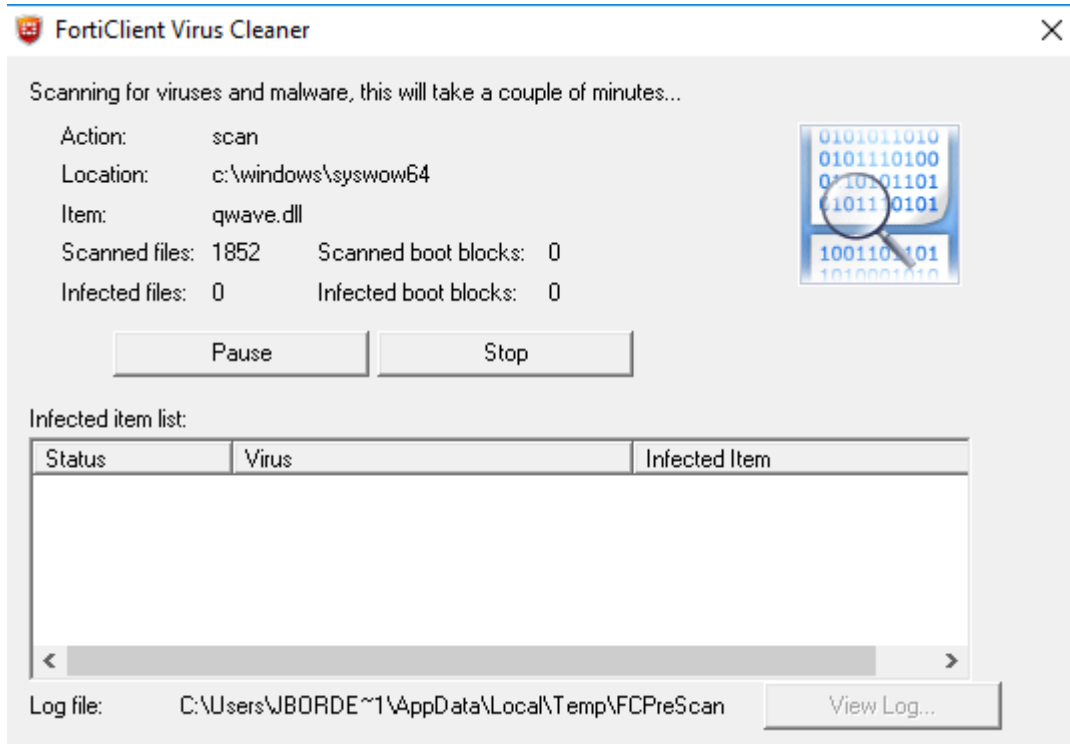
Installing FortiClient VPN Client:.....	1
Connecting to the PRCC Network.....	4
Disconnecting from the PRCC Network.....	6

### Installing FortiClient VPN Client:

1. Navigate your web browser to <http://forticlient.com/downloads>
2. Select the version that matches your operating system
3. Run the installer that is downloaded. You will see a progress bar indicating status:

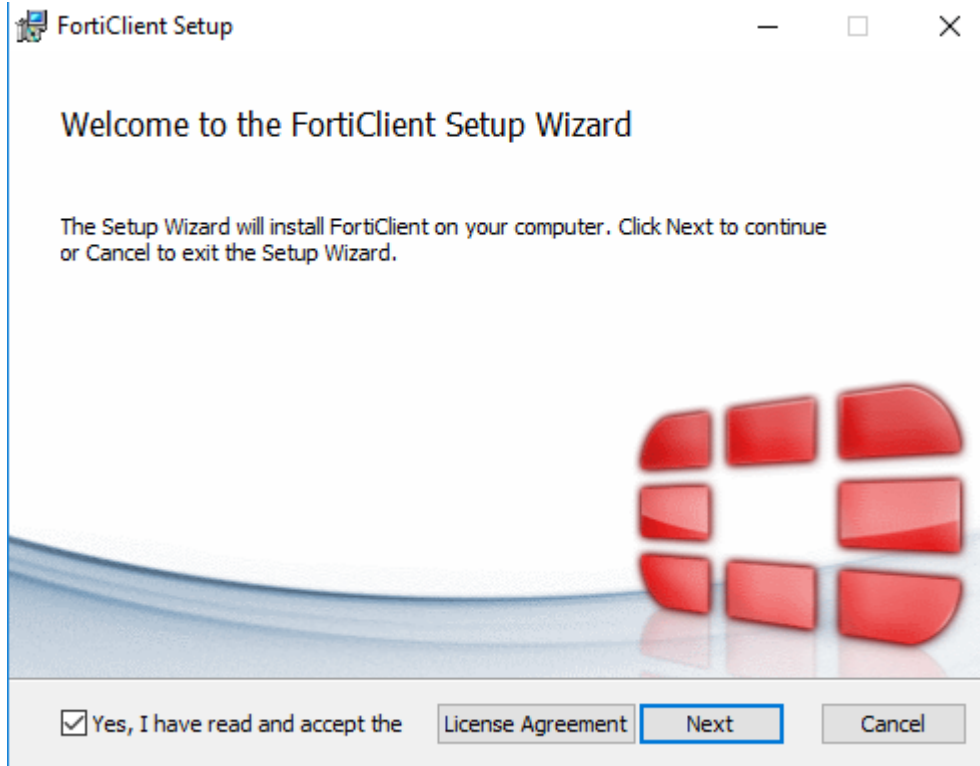


4. FortiClient will run a virus scan on your PC

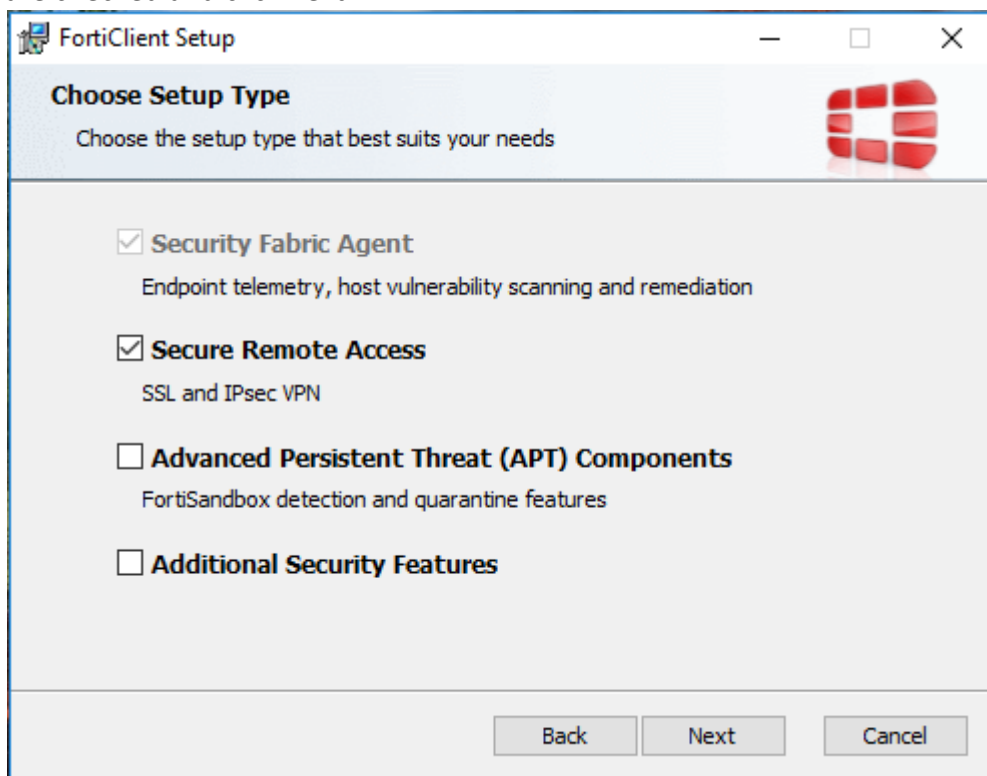




5. After a successful scan, you will see the welcome screen for the installer. Make sure checkbox is checked and Click "Next"

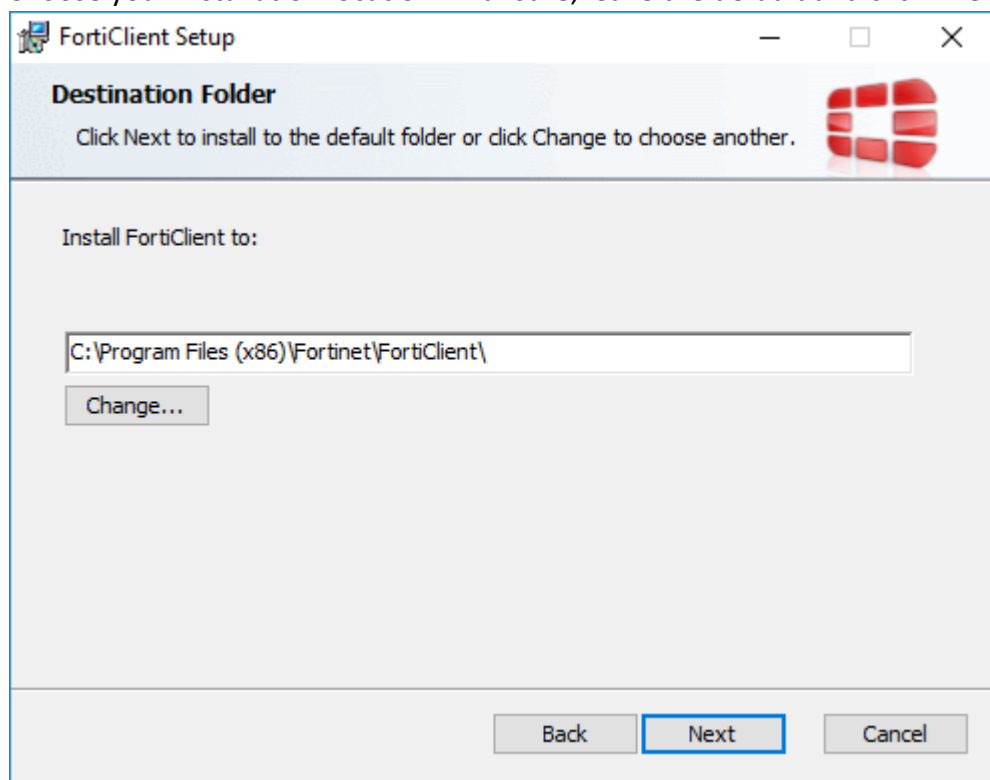


6. Ensure that only the "Security Fabric Agent" and "Secure Remote Access" options are checked and click next





7. Choose your installation location. If unsure, leave the default and click “Next”



8. The client is now ready to install. Click “Install”
  9. Once again you will see a progress bar indicating status
  10. When the installer is finished, click “Finish”
-



## Connecting to the PRCC Network

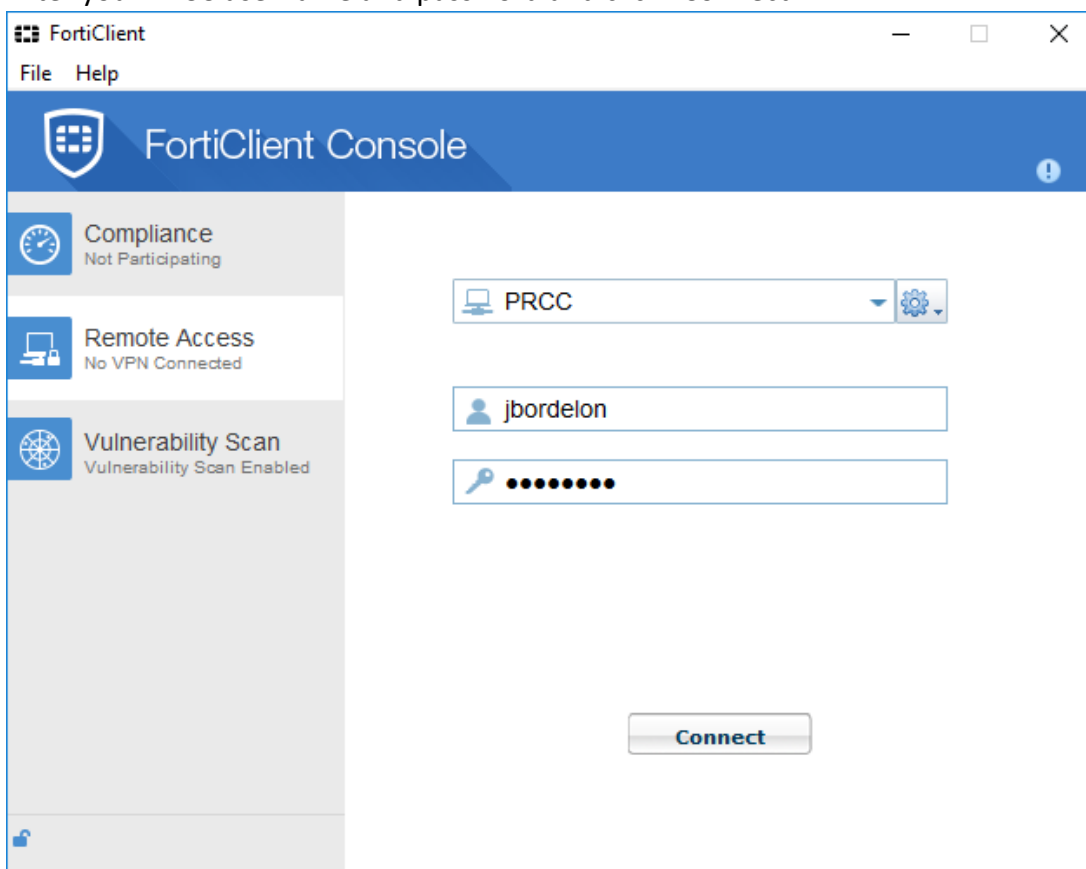
1. Double-click the FortiClient Icon that was installed to the desktop
2. In the FortiClient Console, click the "Remote Access" tab
  - a. **If this is your first time** using the client, click "Configure VPN"
  - b. In the Edit VPN Connection menu, enter a name for the connection
  - c. Specify the Remote Gateway: vpn.prcc.edu
  - d. "Client Certificate" and "Do not Warn Invalid Server Certificate" should both be unchecked.
  - e. Click Apply

A screenshot of the FortiClient application window. The title bar says 'FortiClient'. Below it is a menu bar with 'File' and 'Help'. On the left is a sidebar with a tree view showing 'PRCC' and 'SSL-VPN'. The main area is titled 'Edit VPN Connection'. At the top of this area are two tabs: 'SSL-VPN' (selected) and 'IPsec VPN'. Below the tabs are several fields: 'Connection Name' with the value 'PRCC', 'Description' (empty), 'Remote Gateway' with the value 'vpn.prcc.edu', and a checkbox for 'Customize port' with a value of '443'. Under the 'Authentication' section, there are three options: 'Prompt on login' (selected with a radio button), 'Save login' (unselected), 'Client Certificate' (unchecked checkbox), and 'Do not Warn Invalid Server Certificate' (unchecked checkbox). At the bottom right are 'Apply' and 'Close' buttons.

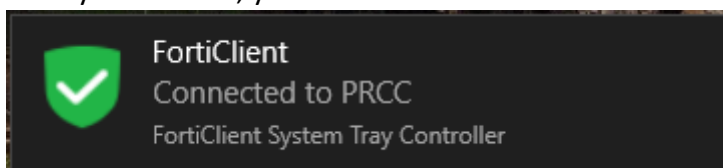
3. On the Remote Access tab, make sure the connection you created is selected



4. Enter your PRCC username and password and click “Connect”



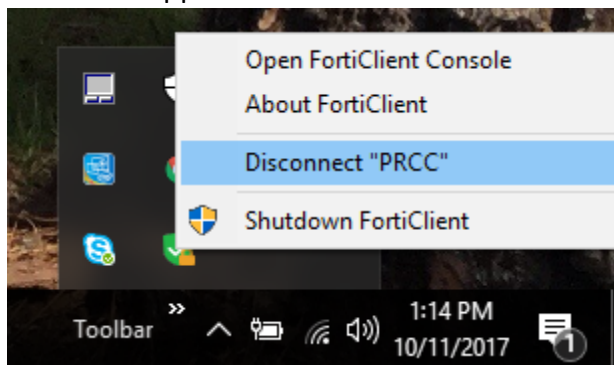
5. After you connect, you should see a notification indicating success





## Disconnecting from the PRCC Network

1. Locate the FortiClient icon in the system tray and right click
2. Select either "Disconnect" or "Shutdown" which will disconnect and close the FortiClient application



---

*If you need any assistance, please contact the IT Helpdesk at 601-403-1800 or [helpdesk@prcc.edu](mailto:helpdesk@prcc.edu)*